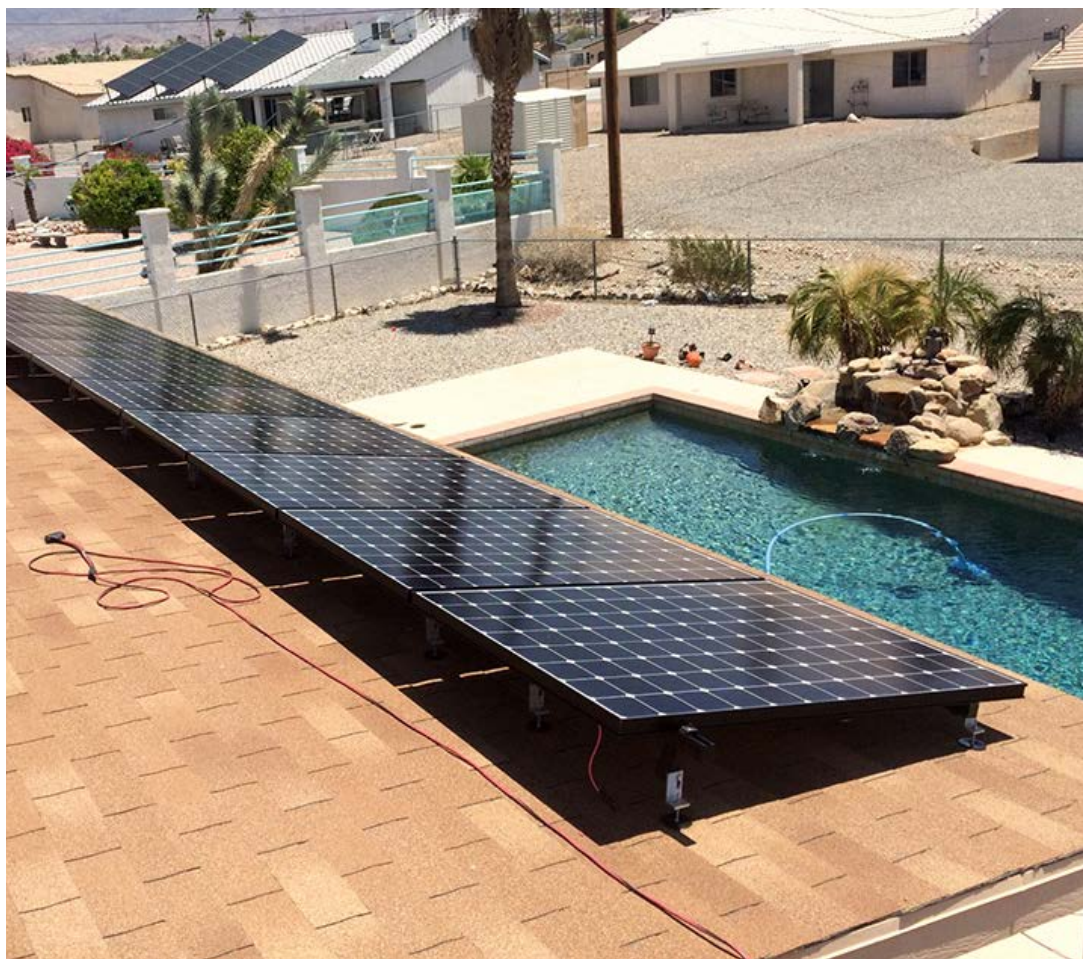


17861

BLACK LOW PROFILE L-FOOT[®] FOR QB2 FOR ASPHALT, EPDM, & TPO ROOFS PATENT # 8448407



A DIVISION OF QUICKSCREWS INTERNATIONAL CORP

TABLE OF CONTENTS

3

SPEC SHEET

QTY & MEASUREMENT INFORMATION

4

UL CERTIFICATION

PROOF OF UL CERTIFICATION

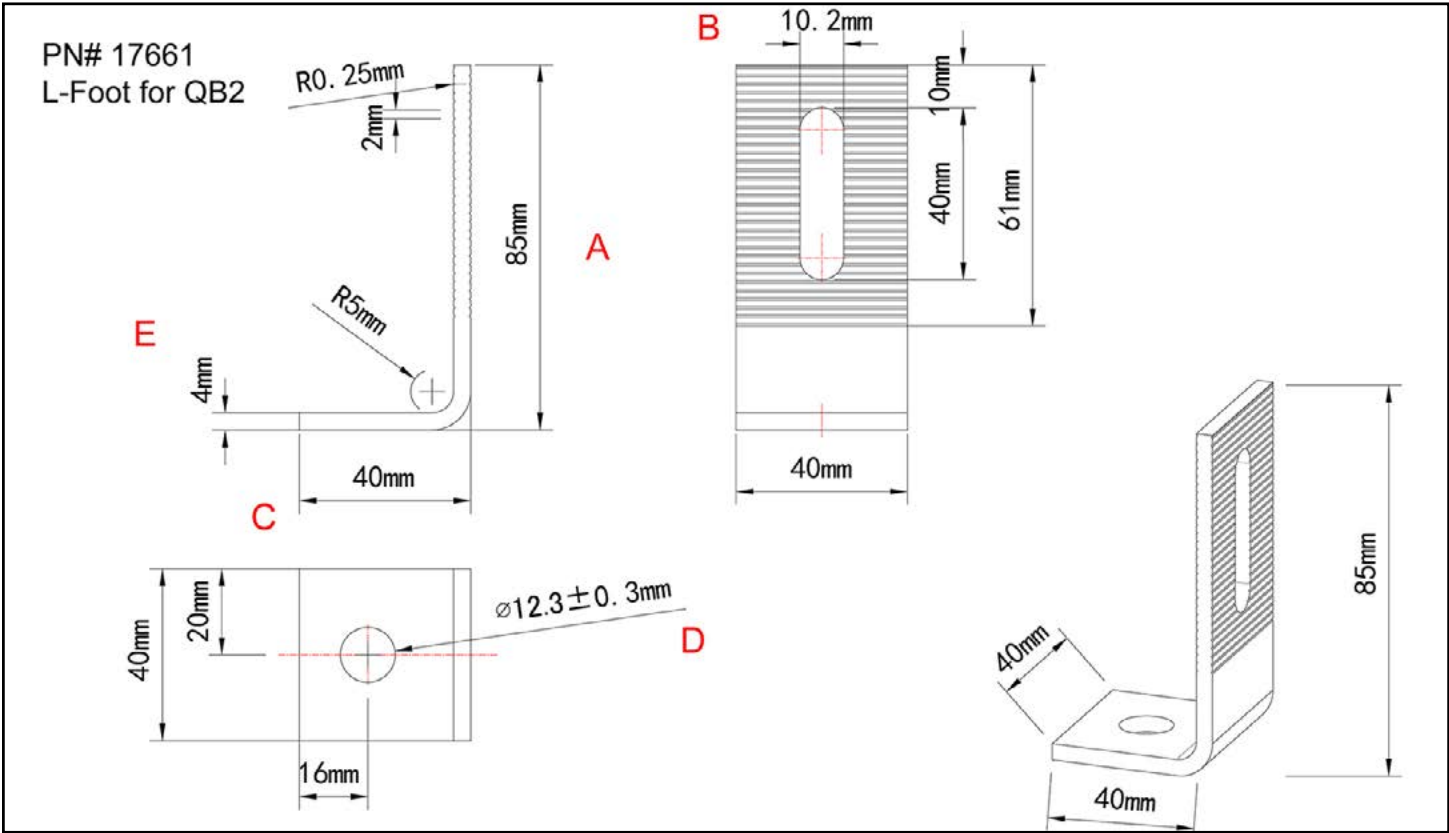
6

INSTALLATION INSTRUCTIONS

STEP-BY-STEP-INSTALLATION GUIDE

SPEC SHEET

Part #	Box Quantity
17861	Low Profile Black L-Foot (25)



CERTIFICATE OF COMPLIANCE

Certificate Number E493748
Report Reference E493748-20170817
Date 2023-April-07

Issued to: QuickBOLT a Division of Quickscrews International Corp
5830 Las Positas Rd
Livermore CA, 94551 US

This is to certify that representative samples of MOUNTING SYSTEMS, MOUNTING DEVICES, CLAMPING DEVICES AND GROUND LUGS FOR USE WITH PHOTOVOLTAIC MODULES AND PANELS - COMPONENT
See Addendum Page for Product Designation(s).

Have been evaluated by UL in accordance with the component requirements in the Standard(s) indicated on this Certificate. UL Recognized components are incomplete in certain constructional features or restricted in performance capabilities and are intended for installation in complete equipment submitted for investigation to UL LLC.


Standard(s) for Safety: UL 2703, Mounting systems, mounting devices, clamping/retention devices, and ground lugs for use with flat-plate photovoltaic modules and panels-.

Additional Information: See the UL Online Certifications Directory at <https://iq.ulprospector.com> for additional information

This Certificate of Compliance indicates that representative samples of the product described in the certification report have met the requirements for UL certification. It does not provide authorization to apply the UL Recognized Component Mark. Only the Authorization Page that references the Follow-Up Services Procedure for ongoing surveillance provides authorization to apply the UL Mark.

Only those products bearing the UL Recognized Component Mark should be considered as being UL Certified and covered under UL's Follow-Up Services.

Look for the UL Recognized Component Mark on the product.


Deborah Jennings-Conner, VP Regulatory Services

UL LLC

Any information and documentation involving UL Mark services are provided on behalf of UL LLC (UL) or any authorized licensee of UL. For questions, please contact a local UL Customer Service Representative at <http://ul.com/aboutul/locations/>



CERTIFICATE OF COMPLIANCE

Certificate Number E493748
Report Reference E493748-20170817
Date 2023-April-07

This is to certify that representative samples of the product as specified on this certificate were tested according to the current UL requirements

Models:

USR – Component, Roof Mounting Hook Units, Models 15891 15893 15987 16000 16317 16318 16319 16320 16988 16990 16991 16993 17508 17509 17510 17511 17512 17513 17514 17515 17516 17517 17518 17519 17520 17521 17522 17523 17524 17525 17526 17527 17536 17537 17538 17539 17540 17541 17542 17543 17544 17545 17546 17547 17548 17549 17550 17551 17552 17553 17554 17555 17556 17558 17559 17560 17566 17567 17568 17569 17570 17571 17572 17573 17574 17575 17576 17577 17578 17579 17580 17585 17586 17587 17588 17589 17592 17596 17597 17598 17599 17600 17601 17606 17607 17608 17609 17610 17611 17612 17613 17614 17615 17616 17617 17618 17620 17621 17622 17623 17624 17625 17626 17627 17628 17629 17630 17631 17632 17633 17636 17637 17638 17639 17640 17641 17642 17643 17646 17647 17648 17649 17650 17651 17652 17653 17654 17659 17664 17667 17669 17670 17671 17672 17673 17678 17679 17680 17681 17686 17687 17688 17689 17700 17701 17702 17703 17704 17705 17706 17707 17708 17709 17710 17711 17712 17717 17718 17750 17751 17752 17753 17759 15891-10 15891BLK-10 15987A 15987B 17667SS 17672SS 17680SS 17688SS 17713SS 17720 17721SS 17723 17724SS 17726 17727SS 17729 17730SS 15894SS 15891SS 15987BSS 17660 17661 17662 17663 17747 17748

Deborah Jennings-Conner

Deborah Jennings-Conner, VP Regulatory Services

UL LLC

Any information and documentation involving UL Mark services are provided on behalf of UL LLC (UL) or any authorized licensee of UL. For questions, please contact a local UL Customer Service Representative at <http://ul.com/aboutul/locations>



INSTALL INSTRUCTIONS

BLACK QB2 (17862)

RECOMMENDED MATERIALS

- Tools to locate and mark rafter
- Drill with a 15/64" drill bit
- MFG approved sealant (optional)
- 1/2" Nut Setter

INSTALLATION INSTRUCTIONS

1. Locate and mark the rafter
2. Predrill the hole
3. Optional: Fill the predrilled hole with MFG approved sealant
4. Optional: Place a ring of sealant around the bottom of the Microflashing® washer
5. Place the Microflashing®
6. Insert the Bolt into the L-Foot
7. Drive the Bolt until the Microflashing® is compressed

Use a minimum torque of **150 in-lbs** to properly compress Microflashing® when installing QB2.

The Bolt will compress the Microflashing® and when fully compressed the L-Foot will not rotate.



1



2



3



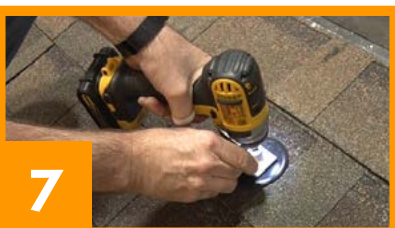
4



5



6



7



INSTALL INSTRUCTIONS CONT.

CRITICAL PLACEMENT: BUTT JOINTS & KEYWAYS

The Microflashing® must be evenly compressed against the shingle surface to seal correctly. At most installations points this occurs normally. However, extra care is required when the mounting location falls over a butt joint or keyway (ridges or gaps in the shingle surface).

The installer is responsible for determining the best method to create a flat, even surface for the Microflashing®, either by adjusting mount location or addressing the shingle condition as appropriate.

SHINGLE OVERLAPS & RIDGES

- Do not place the Microflashing® directly over butt edges or overlapping shingles.
- Edge overlaps create ridges that prevent even compression.

Preferred approach:

Whenever possible, adjust the mount location up or down so the Microflashing® can sit fully flush on a flat shingle surface, either below the edge/overlap or fully onto the upper shingle, allowing the entire flashing to seat evenly.

If the mount location cannot be moved:

The installer must determine the best method to create a flat, supported surface. Options to consider include:

- Add sealant above the mount — when installing where two shingles meet, add a bead of sealant in the gap between the shingles on the sky-side (the uphill side) of where the Microflashing® will sit. This ensures water sheds properly above the mount.
- Sliding the Microflashing® under the upper shingle, or
- Trimming the shingle as needed so the Microflashing® can sit flat and fully supported.



INSTALL INSTRUCTIONS CONT.

KEYWAYS (3-TAB SHINGLES), GAPS AND CHANNELS

- Do not span a keyway gap or butt joint channel with the Microflashing®.
- Keyways and channels are designed to shed water and must remain open to function correctly.

Preferred approach:

Whenever possible, adjust the mount location so the Microflashing® sits entirely on solid shingle, clear of a channel, allowing full, even compression.

If the mount location cannot be moved:

The installer must determine the best method to create a flat, supported surface. Options to consider include:

- Sealing the channel to create a continuous surface even with the surrounding shingles, then installing the Microflashing® flat over the sealed area.

ENSURING PROPER COMPRESSION

- Use the torque specified on page 7 to ensure the fastener is fully compressed
- The Microflashing® should always form a smooth, even concave shape with no gaps, lifting, or uneven deformation around its outer edge.

