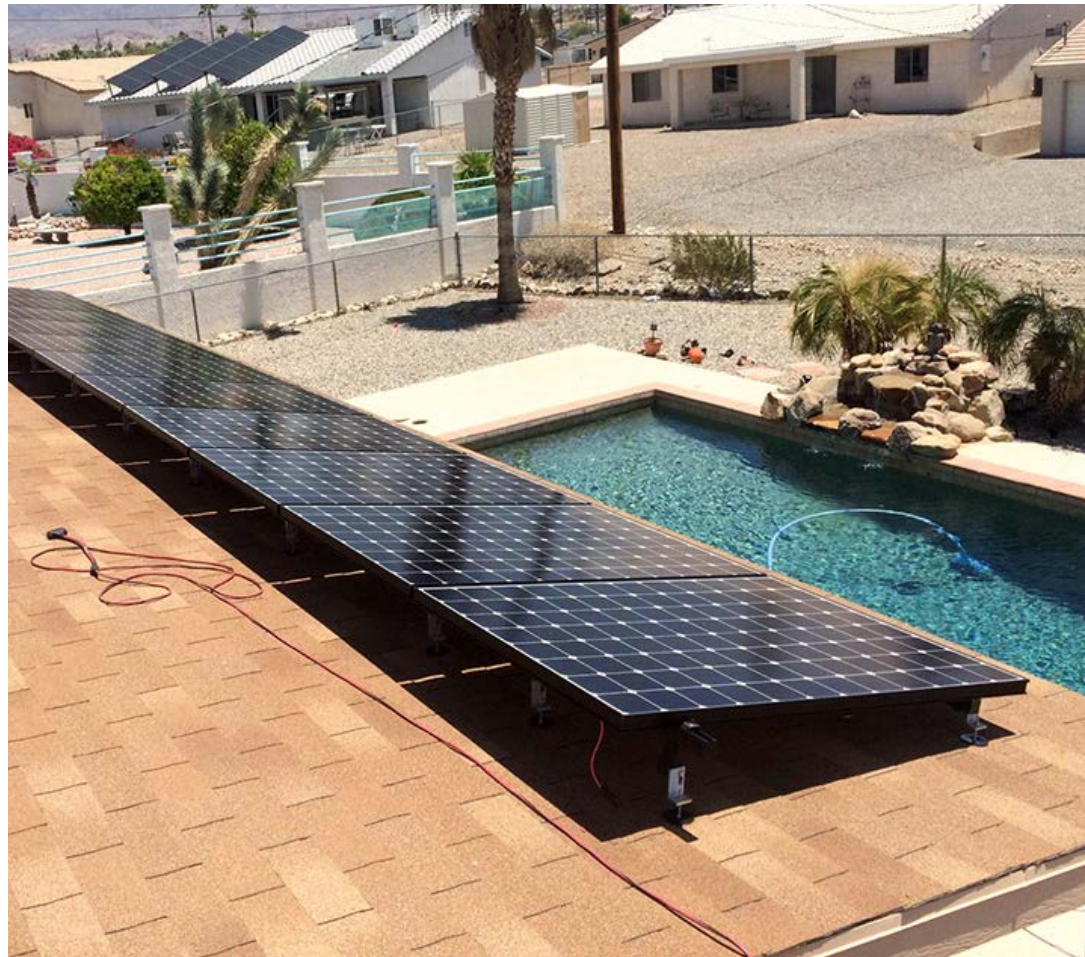


17782

17783, 17785

QuickPATCH®
FOR ASPHALT ROOFS



A DIVISION OF QUICKSCREWS INTERNATIONAL CORP

TABLE OF CONTENTS

3

SPEC SHEET

QTY & MEASUREMENT INFORMATION

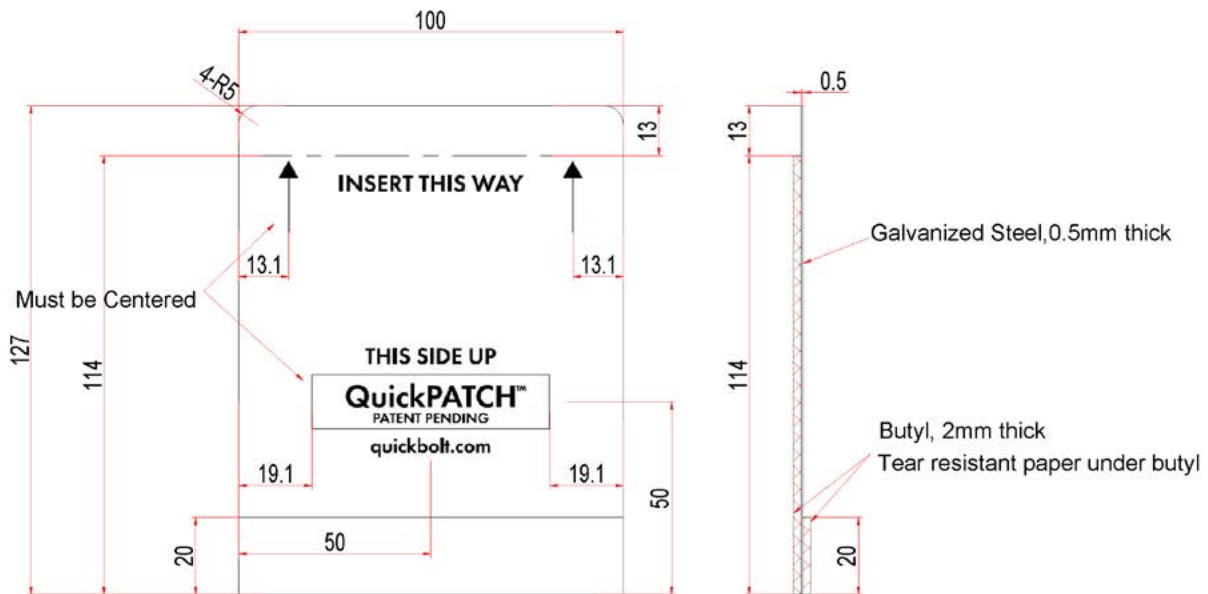
4

INSTALLATION INSTRUCTIONS

STEP-BY-STEP-INSTALLATION GUIDE

SPEC SHEET

Part #	Box Quantity
17782	150 patches/CS
17783	4 patches/PK
17785	16 patches/PK

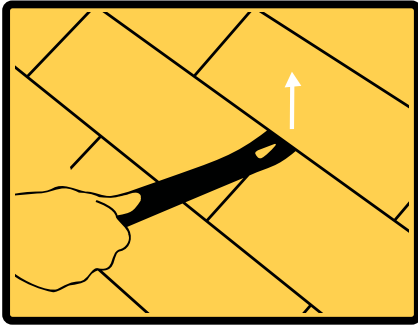


QuickPATCH™
PN# 17782, 17783, 17785

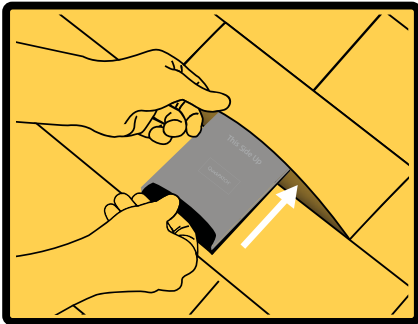
Tolerance Range					
Tolerance	mm			Scale	Quantity
6<	±0.1	Design			
6-30	±0.2	Drawing			
31-120	±0.3	Confirm			
121-400	±0.4	Verify			
401-1000	±0.5				



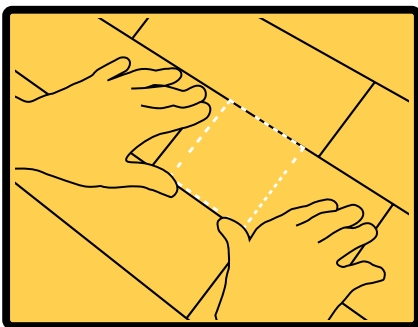
Peel, place and press!



1. Locate the hole and break the adhesive seal on the shingle course just wide enough to fit the 4-inch wide QuickPATCH®.



2. Remove the paper and insert the patch under the shingle. Orient the patch metal side up, with the butyl strip toward the shingle's broken adhesive seal.



3. Push the patch under the shingle until it covers the hole and sits flush with the bottom edge of the shingle course.



4. Press the shingle course back down. Then, step on and press the patch area with even pressure to engage the butyl and reseal the adhesive STRIP.