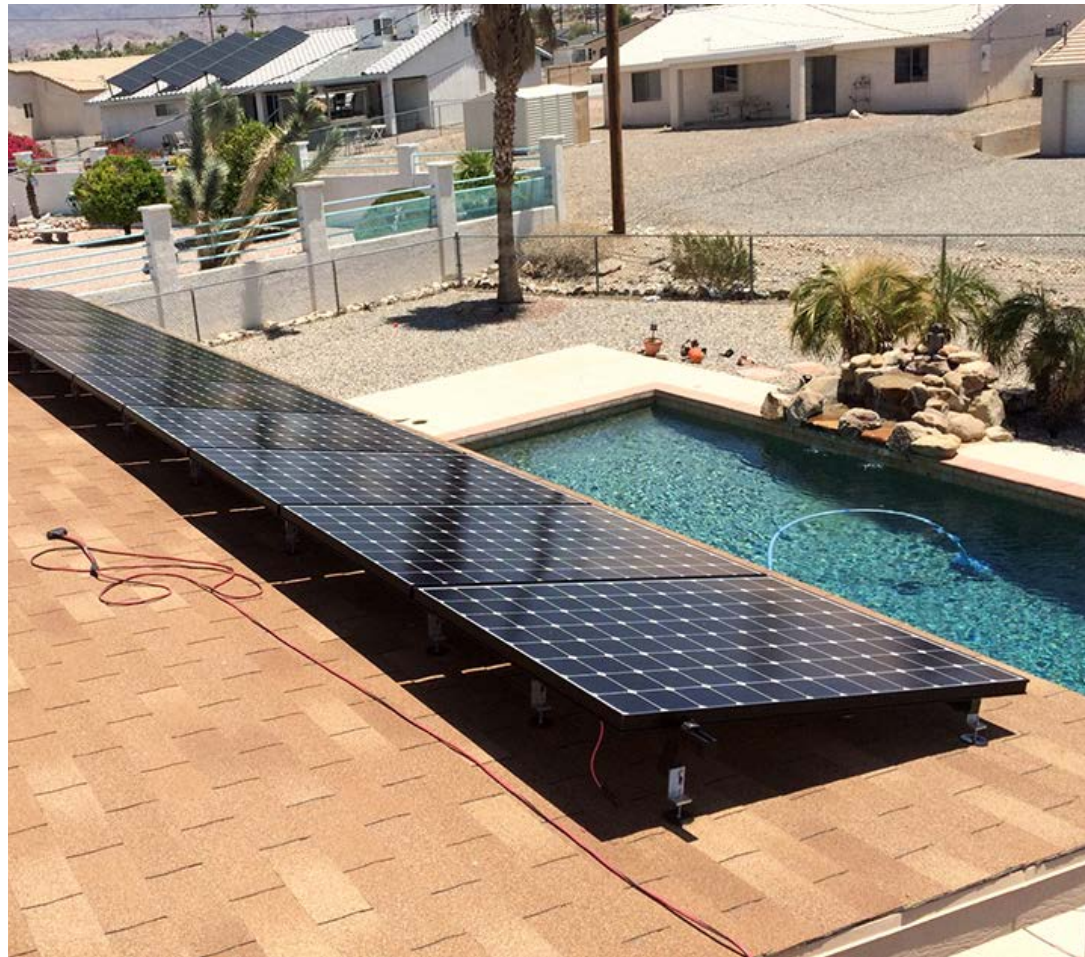


16255

QUICK RATCHET CONDUIT CLAMP FOR QB1 MOUNTING KITS



A DIVISION OF QUICKSCREWS INTERNATIONAL CORP

TABLE OF CONTENTS

3

SPEC SHEET

QTY & MEASUREMENT INFORMATION

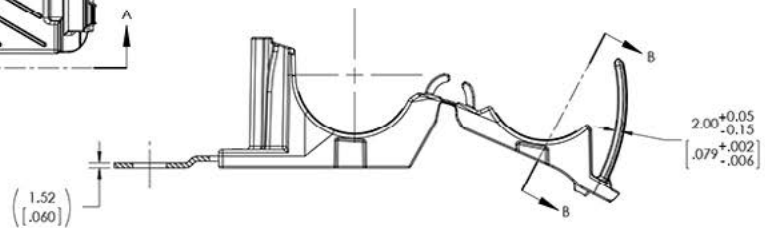
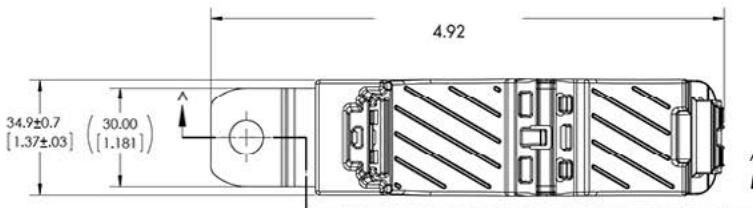
4

INSTALLATION INSTRUCTIONS

STEP-BY-STEP-INSTALLATION GUIDE

SPEC SHEET

Part #	Box Quantity
16255	10 Quick Ratchet Conduit Clamps



INITIAL MOLD VALIDATION:

1. ITS-0003 RATCHET P CLAMP SOLID MANDREL TEST:
EXCEEDED 445 NEWTONS (100 LBS) MIN AT A NOMINAL BUNDLE DIAMETER OF 25.40 [1.000]
TESTING ONLY REQUIRED OF CONFIGURATION *RCC180SM10SS, *RCC180LM10SS, AND *RCC90LM10SS
*TESTING CAN BE SUBSTITUTED WITH M6, M8, M12 VERSION MOUNTING HOLES

2. ITS-0008 CLOSE AND RELEASE TEST:
EXCEEDED 445 NEWTONS (100 LBS) MIN AT A NOMINAL BUNDLE DIAMETER OF 25.40 [1.000] AFTER CLOSING AND RELEASING 40 TIMES

3. ITS-0014 LOW TEMPERATURE HINGE TEST:
NO DAMAGE OCCURRED AFTER BENDING LIVING HINGE 40 TIMES AT -40°C

NOTE: TESTING #2 AND #3 CAN BE DONE ON ANY TYPE NUMBER AND WILL APPLY TO ALL OTHER TYPE NUMBERS IN THE TABLE ON SHEET 2

PERFORMANCE REQUIREMENTS:

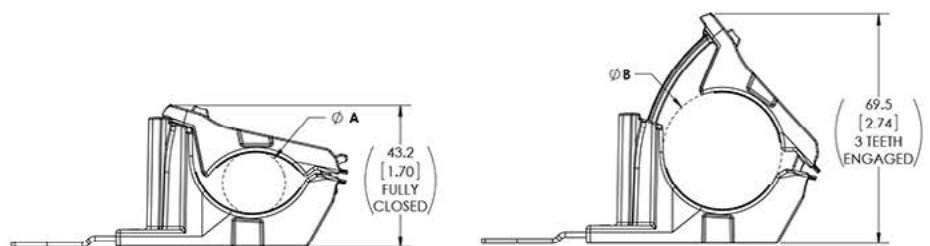
DRY AS MOLDED WITH $\leq 0.5\%$ MOISTURE CONTENT:

4. ITS-0001 RATCHET P CLAMP SPLIT MANDREL TEST:
445 NEWTONS (100 LBS) MIN AT A NOMINAL BUNDLE DIAMETER OF 25.40 [1.000]

NOTE: TESTING CAN BE DONE ON ANY TYPE NUMBER AND WILL APPLY TO ALL OTHER TYPE NUMBERS IN THE TABLE ON SHEET 2

5. MAXIMUM PERCENT REGRIND PERMISSIBLE: 25%

6. MAXIMUM ALLOWABLE FLASH OR MISMATCH TO BE: 0.25mm



MINIMUM BUNDLE DIAMETER

MAXIMUM BUNDLE DIAMETER

BUNDLE TYPES	A MINIMUM DIAMETER	B MAXIMUM DIAMETER
SOFT	19.4 [.76]	36.0 [1.42]
HARD	18.6 [.73]	35.2 [1.39]

INSTALL INSTRUCTIONS



RECOMMENDED MATERIALS

- ½" Wrench
- Flat Head Screw Driver



INSTALLATION INSTRUCTIONS

1. Before placing the nut on the L-Foot, insert the Quick Ratchet Conduit Clamp onto the Bolt
2. Place the nut and tighten
3. Run the conduit
4. Close the Quick Ratchet Conduit Clamp to secure the conduit
5. To open or readjust, insert a flat head screw driver into the slot to release the ratchet

